

## ***Ginawa Ko Naman: A Narrative Film About the Subpar Healthcare that Drives Person with Disabilities to Go for Non-medical Treatments***

Genalie Eclipse

### **Adviser**

Mr. Elvin Valerio

### **Abstract**

The subpar healthcare technology and the system continuously make people with disabilities (PWD) or people with special needs due to disease or illness experience struggles and barriers in living their daily lives. They encounter problems in a location that is not easily accessible. Poor assistive technology (assistive, adaptive, and rehabilitative devices). Negative attitudes toward disability among the public. Services and initiatives restrict their participation in many facets of society (Centers for Disease Control and Prevention, 2020). Patients receive little to no assistance from a subpar medical finance system. This qualitative research study aims to comprehensively understand the relationship between subpar healthcare technology and systems, individuals with special needs, feelings of inferiority, and negative behavioral changes. Data will be collected through one-on-one interviews, enabling in-depth exploration of participants' experiences. The study intends to present a creative output that visually portrays the impact of subpar healthcare on individuals with special needs or illnesses and to drive positive changes in healthcare practices and policies, ensuring improved support and overall well-being for individuals with special needs. Moreover, the research aims to shed light on how subpar healthcare drives individuals with disabilities towards seeking non-medical treatments as alternative solutions.

**Keywords:** *persons with disabilities, health, illness, healthcare, medical finance system, subpar healthcare*

### **Introduction**

As a generation z child born in an era in which technology is starting to dominate the market and household through machines, computers, and other devices and electronics. I never thought that the presence of it makes the elderly's life around me easier after some adjustments because I personally never had a hard time adjusting to how things work around me.

Years after, as being exposed to different advancements in technology. I started to appreciate how it greatly eases my everyday living. Little did I know that there are people born with special needs. People with special needs include those we perceive as the standard - no serious physical or mental problem; living with special needs because of an accident or a disease. I did not know that technology's pace is beyond what we see.

I can clearly say that I am blessed to do things on my own, and none of my family members do not have to suffer from special needs. However, what scares me the most is that there is still a probability that I, my family, and my future family may need assistance because of special needs. Even if my family has the means to afford what they need and want, if they happen to cannot do anything to help their loved ones, as what they are looking for does not exist while living in a technologically advanced society will be hard for them.

It led me to think that people with special needs will find it harder to live their life to the fullest and at ease, which used to be the primary goal of innovation and technological changes. Fast-paced technological advancement inevitably helps the lives of many in any possible way. However, the benefit of healthcare technology and systems to all will be helpful to people with disabilities or special needs and those who might need it in the future.

A short film depicting the internal and outward problems of a person with a handicap or special needs due to illness addresses technological and systemic subpar healthcare that has a perpetuating impact.

"Ginawa Ko Naman" narrative film revolves around the lives of god-siblings. Rafael, a financially secure young adult male, becomes ill with cancer, which weakens his legs. Due to a lack of health and rehabilitation technologies and a subpar system of financing despite being wealthy, they are forced to try alternative therapies, worship religious figures, take herbal medication, and do function. Rafael demonstrates that he is desperate to live longer, even though the doctor has diagnosed him with a hopeless illness. The situation made Rafael cranky to the people around him because there is no positive progress in his health, and he becomes emotionally unstable as he does things dependently. Nathan, the god-sibling of Rafael, takes the challenge, patiently takes care of him, and learns why Rafael displays such behavior.

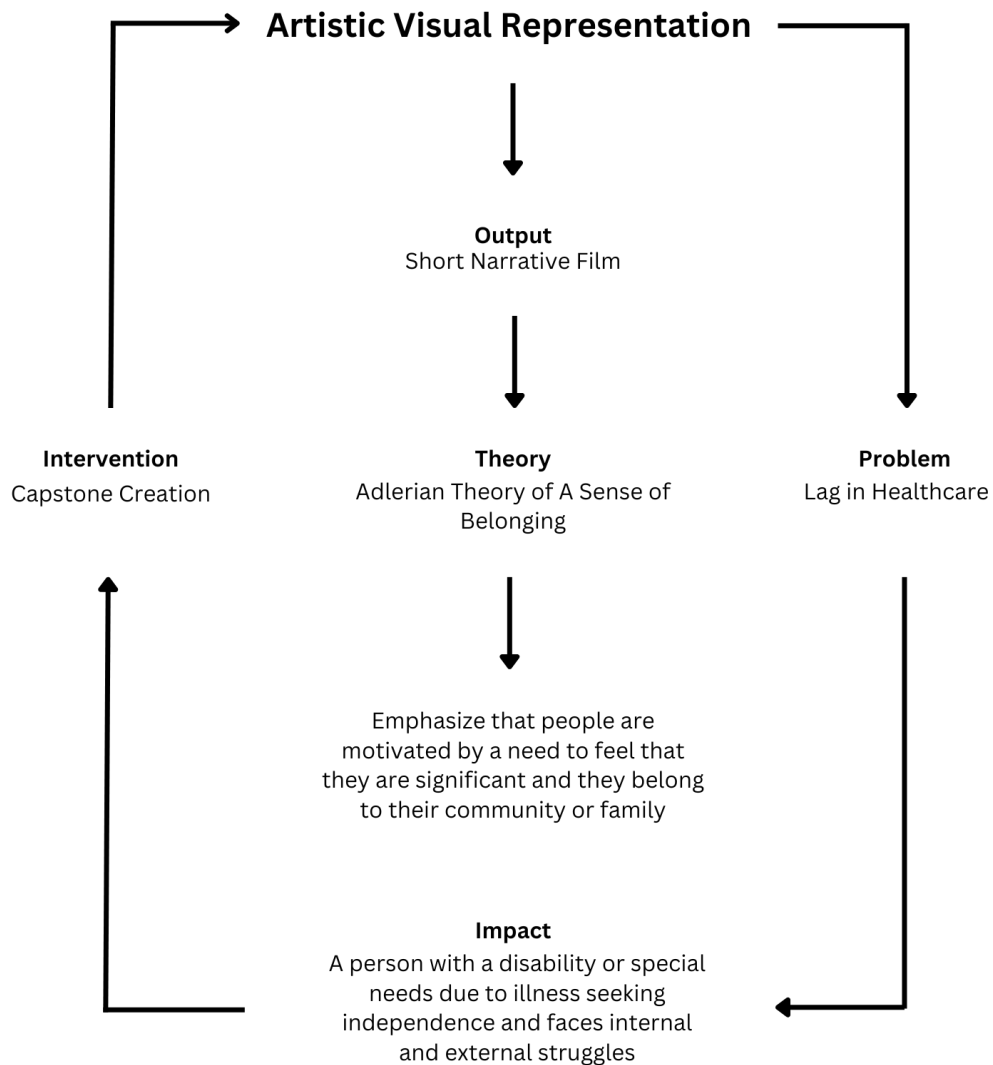
Nathan has to live with his god-sibling because his father passed away, and his mother left him due to financial struggles. Nathan has a brotherly bond with his god-sibling, personality makes it easier to soften his god-sibling. They both learn to enjoy each other's company. As time progresses, Rafael's disease rapidly degrades his health which causes his death. However, he dies peacefully, knowing Nathan's presence helps him live his daily life at ease and live his remaining life to the fullest and convinces Nathan to mend fences with his estranged mother.

A narrative short film in which one of them will experience the everyday struggles of a person with a disability or special needs. The quality and data of my creative output are a priority. Therefore, for my **research design**, I will ensure the quality of the two while gathering data through credible online sources and studies and will also conduct an interview.

The one-on-one informal interview will collect data from three interviewees. It is much easier for me to ask additional questions in this manner to comprehend and measure my interviewee's response. Because each interviewee will undergo a separate interview, replies by one respondent have no bearing on another. Interviewees will be limited to anyone who experiences struggles with the financial system for medical expenses and caring for a person with special needs or care. I decided to perform an interview with these people because they can comprehend the study and have first-hand experience. The questions will help me evaluate healthcare and health insurance and improve my creative output by making it grounded in reality.

**Figure 1**

Artistic visual representation of my research journal to produce a creative output.



My creative framework illustrates the steps I took to produce the creative output. It contains words, phrases, and sentences that are significant to the context of the study. Many highly sophisticated inventions that satisfy needs and make living easier were invented and available in 2022. However, none of these inventions fits within healthcare technology or systems. Inventors and developers prioritize communication, transportation, and other profitable improvements. This situation negatively causes a lag in healthcare.

Fast-paced technological advancement inevitably improves the lives of many in any possible way. The benefit of improvement in healthcare technology and systems can change a person's life. However, the neglect of healthcare technology and systems continuously worsens for people with disabilities or special needs, and those who possibly need it in the future will suffer the consequences.

The Adlerian Theory of a Sense of Belonging states that individuals must feel they belong to their community. It discusses that a person is at their best when there is connection and affection from others. They will negatively respond if they don't feel like they belong. The other negative result is withdrawing, competing, or giving up. Additionally, a person with special needs or a disability may feel like a burden to her family since they cannot complete tasks independently. Their feelings of inferiority and estrangement will intensify their negative behavior and cause them to become distant from their family (Smykowski, 2022).

My short narrative film will serve as a call to action to the audience, as it shows that understanding or examining the behavioral patterns of an individual can identify and solve the origin of the problem. In my creative output's case, the sense of belongingness and independence is what the main character seeks, other than health improvement. In addition, even if the main character of my story possesses the financial capabilities to get treatment and help from specialists and doctors. He will never be able to solve his inner or outer struggles as the healthcare technology he needs does not currently exist, and the system of finance for medical expenses is subpar.

The Adlerian approach benefits a person by understanding the root of their practices, and the view of themselves can change (Adler Graduate School, 2021). Understanding will point us to where we can begin to progress. In my creative output and research, because of subpar healthcare technology and healthcare system, the main character was forced to do alternative therapies hoping it would help his situation. His longingness to have a sense of belongingness triggers him to act cranky to other people.

The “Ginawa Ko Naman” is a narrative short film in which the god-siblings support one another as they face life obstacles. A financially secure man, Rafael becomes ill with cancer and cranky toward others, but his god-sibling is willing to take on the challenge. For my **design process**, I will use a literary device as a technique that authors employ to imply themes, ideas, and the meaning of a story. Literary devices come in styles, each providing a specific purpose. Some function at the sentence level, while others serve the entire text. In addition, writers sometimes employ many literary methods together. Colloquialism is when casual and informal speech, including slang, is used in writing to make the conversation seem more natural and authentic, a literary device that I will be using in my short film. To convey the pronunciation, it frequently uses apostrophes and word respells in scripts, dialogues, and subtitles.

The primary **target audience** of my film is graduates or undergraduates. The secondary target audiences are inventors and developers. The people specified as the target audience have the potential to produce new technologies or plans and have future control on this matter that will benefit all. My research journal focuses on our country's subpar healthcare technology and systems. People with specific needs, disabilities, or sicknesses will be affected by the issue. As my creative production demonstrates an awareness of the fundamental cause of an individual's problems or practices, supported by Adlerian Theory, I hope my creative output will impact my target audience's future actions or project plans.

### **Pre-Production**

The early pre-production stage of "Ginawa Ko Naman" will focus on task organization in preparation for the production stage. Tasks include the listing of milestones and deliverables made through a Gantt chart. At this stage, I purchased the planned software that I will use to develop my creative output.

The latter stage of the pre-production is for my story, as it plays a vital role in producing my creative output and other deliverables. I will continuously develop the pre-production deliverables of my creative output, such as script writing, sequence treatment, story structure, mood board, budgeting, character references, and other required and essential deliverables. I will continue to gather data through credible online sources and watch films that can help me deliver my story well by developing my strengths and learning from the mistakes and weaknesses of existing creative outputs and researchers.

I will hold a casting call to find an actor or actress who will meet the physical and technical requirements of the roles in my film. In addition, I will be looking for a specific location that completely matches what I envision or a site that I can manipulate to meet the environmental demands of my film.

## **Production**

The early stages of production will focus on equipment and site bookings. Before shooting my creative output, I will compile a list of my production requirements to ensure a secure and seamless flow of the production of my film. In addition, soft and printed copies of the call sheet - a phrase for a filmmaking schedule - will be provided to my film's cast and crew.

Shooting begins during the production stage. A screenplay supervisor will ensure script consistency throughout production and has a property master to purchase and manage any props in your film. The hair, makeup, and wardrobe departments will handle the performers' visual appearance as the actors or actresses rehearse their lines and block scenes. The production manager will oversee the day-to-day operations and ensure that all auxiliary departments, such as food service, invoicing, and scheduling, have the resources needed to keep on schedule. Camera operators and grips will comply with the director and cinematographer's shooting plan, shooting all necessary footage.

## **Post-Production**

The cinematographer or director will deliver all raw footage captured during the day of filming or at the end of a shoot to the video editor. Once the raw footage is received, the post-production crew will sort and notate for it to be readily discovered and retrieved later. Once the raw footage is received, the post-production crew will sort and notate for it to be readily discovered and retrieved later. The post-production crew often overlooks the importance of this step, and if done incorrectly, it may result in hundreds of lost hours over the life of a project.

Following file organization and backup, the editor will create a rough cut. The editor will use the director and director of cinematography's (DOP) suggestions to make a rough cut - this is the best approximation of the final film. Furthermore, the director and DOP will provide

continuous feedback, and the editor will go through numerous rounds of revision or re-editing until everyone is satisfied with the final cut.

Visual effects are not necessary for my creative work. As a result, it will move on to color correction and color "grades," which relate to manipulating the color to give the film a certain feel or mood. Once everything is in place, it's time to focus on not only how the project visuals but also how it sounds. The sound editor's primary responsibility will be to ensure that the dialogue, foley, and other sound elements have balance in the final mix. The foley artists will create sounds not present or recorded during video production, such as footfall, garment rustling, wind rush, and more. Once a project has completed all preceding processes, collect final remarks. Any fine-tuning has to be done before releasing it to the public.

### **Review of Related Literatures**

Fast-paced technical innovation primarily focuses on communication technology and transportation to create an ultramodern society in which people anticipate what the future may and should be. The review of related literature discusses the challenges faced by persons with disabilities (PWD) and the status and how healthcare technology and systems could help by discussing the Adlerian Theory.

### **External Challenges Faced by PWDs**

The government has tried to provide through enacting national legislation, services, and policies to Persons with Disabilities (PWD) (Gonzales & Kang, 2022). However, the effort is not enough to help them. It is inevitable for PWDs to experience discrimination in employment, education, and accommodation when getting or using services and accessing public places.

Zack and Eva, who are deaf, complained that the absence of accessibility features prevented them from enjoying concerts at their local entertainment facility. The complainants, who have hearing issues, said they could not enjoy performances at their local entertainment venue because it was not modified to match their requirements. They agreed that the venue operator would install a hearing assistance system and allow the complainants to sample the equipment (Australian Human Rights Commission, 2022). Simple rehabilitation technology (RT) – is the use



of technology to address the needs of people with disabilities; specifically, the hearing aid can help them (Massachusetts Rehabilitation Commission, 2022); what more if inventors and innovators create the lacking ability of the hearing aid they mentioned.

Zack and Eva's struggles may not exactly be what the characters of my creative output are experiencing; these people with special needs feel the same pain of inferiority and the burden of being dependent. The literature and the character of my creative output explicitly show the struggles of their fellow PWDs, silently seeking help by understanding the root cause of their problems or daily struggles.

### **Internal Challenges PWDs Could Experience**

People with impairments are more prone to social isolation, which has health consequences, including an increased risk of death. According to Shanoor Seervai, Arnav Shah, and Tanya Shah, depression and anxiety can emerge as options for social engagement become increasingly limited based on an individual's capacity to manage their physical surroundings.

Social isolation happens to disabled people who may struggle to participate in daily life as they need human assistance every day, and asking for help over and over can feel embarrassing to them. They are subjected to social comparison as they compare themselves to their non-disabled counterparts and feel inferior (Akins, 2022). The majority of the causes are changing, yet they are nonetheless potent. Some haven't worked out how to socialize with others because they are self-conscious about their impairments. They cannot always think positively about who they are and the people around them. Many of them are scared and apprehensive as a result of terrible experiences in the past (Pulrang, n.d.).

We discovered that untreated impairments or illnesses generate both exterior and internal challenges. However, simply knowing or being aware of the subject is insufficient. To construct or develop a solution to this problem, we must first understand where they are coming from and how they form their behavior.

### **Adlerian Theory: A Sense of Belonging**

Before establishing his mark in psychology, Alfred Adler, a living legend and psychologist in the early 20th century, started his career as a medical student. Before leaving because of the

therapeutic theories that would eventually become Adlerian philosophy, he was Sigmund Freud's coworker. Contrary to Freud and many other prominent psychologists of his era, Adler believed that the external and internal factors a person experiences throughout their lives are what they are (Cherry, 2020).

According to the Adlerian Theory of a Sense of Belonging, people must feel like they belong. One is at their best when one senses a bond with and love from others around them. If someone does not feel like they belong, they will act firmly. Withdrawing, competing, or giving up are all examples of this. Discouragement will intensify this habit and make the person distant from their family (Smykowski, 2022).

We may start moving toward development and healing when we take the time to examine the behavioral patterns of an individual. Persons with special needs' behavior reflects their need for validation and acceptance. Even if they receive enough attention and care, they will display unpleasant behavior, as where the problem originates is not solved. The Adlerian approach benefits a person by understanding the root of their practices, and the view of themselves can change (Adler Graduate School, 2021). Understanding will point us to where we can begin to progress. In my creative output case, the subpar health technology and system negatively affects the person with special needs as he does not have a sense of belongingness and he is not physically able to do things independently.

### **Importance of Technology in Healthcare**

Continuous improvement of advanced and adaptive healthcare information systems will improve medical quality while cutting costs, boosting efficiency, minimizing errors, improving patient satisfaction, and will better help outpatients and inpatients, including health providers.

Digital technologies substantially facilitate communication between patients and healthcare professionals by digital technologies. Patients are no longer obligated to receive letters alerting them of their consultations and testing. As a result of technological advancements, all communication duties have become much easier and less expensive. Furthermore, medical practitioners can conduct webinars and videos and communicate with other specialists through online platforms and social media. Videoconferencing has enabled people to converse across borders. In addition, an example of innovation is Capsule Endoscopy cameras, which are small

enough to be swallowed by a patient and have enhanced patient care. Doctors can then monitor the camera to see any inside issues (IED Team, 2022).

In general, digital technology has improved healthcare. Hopefully, this trend will continue in the future. AI, machine learning, blockchain, mobile healthcare apps, smartwatches, and other technological advancements will help healthcare's future. There is no limit to how far digital technology may take healthcare if healthcare organizations and experts keep their eyes open and develop the necessary infrastructure and processes.

### **Importance of Health and Rehabilitation Technology**

The Manila city government has begun its Robotic Rehabilitation program for physical therapy at the Ospital ng Maynila Medical Center (OMMC). Isko Moreno, the mayor of Manila, said that those with degenerative, incurable neuromuscular illnesses, Parkinson's disease, strokes, spinal cord injuries, and traumatic brain injuries benefit from robotic assistance (Inquirer, 2021). It facilitates movement and allows a person with physical limitations to exert more motor effort than usual.

The Hybrid Assistive Limb (HAL), is a robotic exoskeleton. It can help people with a range of neurological conditions. It includes stroke or CVA patients, patients with spinal cord injury, traumatic brain injury patients, or other brain and neuro-muscular system disorders resulting in weakness and paralysis of both the upper and lower extremities. The brain gives the muscle the order to perform the appropriate action when someone attempts to move. The skin's surface then emits a faint signal indicating the wearer's desire to move. HAL uses sensors attached to the skin's surface to detect these purported "bio-electrical impulses" to perform the necessary motions under the wearer's voluntary control (Brooks Rehabilitation, n.d.). They believe the robot can help accelerate the brain's capacity to learn motor abilities.

This Robotic Rehabilitation program in Manila can help those in need. Although, it is not yet concrete that it can restore a person's motor abilities. In my creative output, one of my characters is a Robotics Engineering student who is continuously developing his robot that could help people that are unable to walk to have the ability again. This Rehabilitative Technology (RT) is indeed helpful to persons with special needs, but the pace of RT in the Philippines is not as fast as technological advancements in gadgets and vehicles.

### **Subpar Healthcare Technology**

In 2022, different great invented technologies can ease one's life. However, none of these inventions falls under Rehabilitation Technology. One of the greatest inventions is Ameca. It is a humanoid robot designed to seem more like a robot than a person. It has astonishing seamless and purposeful movements of the arms to human-like facial emotions and the tiniest eye twitches. It is to be utilized in customer service, information terminals, or even for entertainment to engage with people naturally (MAKO, 2022).

Another invention in 2022 is the Kohler. It aims to leverage IoT, and smart-home technologies conveniently provide users with the perfect bathing experience. A smart bath where users can control the exact water temperature, light, fog, color, how much to fill, and even when to drain (MAKO, 2022). Sadly, robots for amputees cannot perform seamless and purposeful movements just like the robot Ameca, and people are fond of hearing what a smart bath can offer more than what advancement in Rehabilitation Technology could offer.

Due to a lack of healthcare technologies and a subpar healthcare financial system, the character in my film tries alternative therapies, worshipping religious figures, taking herbal medication, and doing unction. The incident demonstrates that he is desperate to live longer, even though the doctor has diagnosed him with a hopeless terminal sickness.

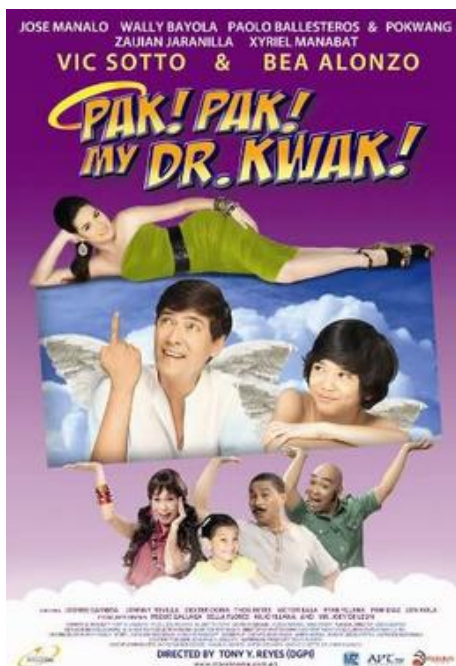
### **Review of Related Works**

The review of related works discusses how healthcare technological inventions and quality systems could positively help people with special needs and understand an individual. More than that, it will also discuss how Adlerian Theory helps us understand the behavior of a person affected by their daily struggles in life.

### **People Lose Hope to Medical Treatment and Begins to Believe in Faith Healer “Pak! Pak! My Dr. Kwak” (2011)**

#### **Figure 2**

Pak! Pak! My Dr. Kwak! (2011) directed by Tony Y. Reyes



The Filipino movie is about an angel sent to Earth to persuade a con man healer to alter his ways, only for the con man to use his angelic healing powers against him. The angel has to discover ways to bring the con man and one of his victims together on the road to salvation.

However, the movie is really about a con man who loses faith in medical doctors who fail to cure the sickness of his late wife and ill father. When he meets a child who has the power to heal people, he begins to be independent of the child's ability, hoping that it could save his father. It turns out that the angel in a child form can heal anyone except his father and forces the con man to give medical doctors to cure his father.

The movie shows how people depend on non-medical treatment or alternative therapies because they find things to which they can cling their hope in an affordable yet perceived as effective by those who tried it. In my case, the main character's father, who struggles financially and loses hope for medical treatments, makes his son do alternative ways to cure his illness.

### **A Girl Forced to Try Alternative Therapies Because of an Incurable Disease “Babaeng Allergic sa Wifi” (2018)**

#### **Figure 3**

Jun Lana (2018) directed by Jun Lana



“Babaeng Allergic to Wifi” is about an internet-obsessed youngster who develops a rare ailment that causes her to relocate to a remote village, forced to navigate her relationships without the aid of technology. The character seeks help from a doctor. The doctor tried his best to cure her, but there was no health improvement. Therefore, the doctor explores alternative therapies such as hypnotherapy, and needle therapy and performs a ritual to help her god-child patient.

The character of “Babaeng Allergic to Wifi” goes through the same struggles as the main character of my film. In which he does alternative therapies or remedies and relay his wellness to God and religious displays.

### **Technological Advancement for Visually Impaired in “Start-Up” (2020)**

#### **Figure 4**

Start-Up (2020) a series by Studio Dragon



After entering the Sandbox, Samsan Tech began to generate concepts for their company, service, or application. On demo day, startups present their business plans to investors, panelists, and mentors to see which ones have the potential to be successful. Do-san created the NoonGil software exclusively for those with visual impairments. Users aim their cellphones in a certain direction, and (A.I.) Artificial Intelligence (named Yong-sil) included inside the software accurately describes and informs the user using speech recognition what it has seen. The eye of the user is NoonGil. After knowing in secret that Choi Won-deok, played by Kim Hae-sook, Dal-grandma, gradually loses her vision after being diagnosed with the disease, Do-san pushes it through (David, 2020).

Today, innovation is a hot topic. Certain things can currently be made that appeared unattainable in the past. “Start-up” is a Korean drama that tells the story of young people who dream of success and start working as start-ups. It shows their start and their growth. More than that, it highlights the importance of making a different application or innovative product that does not affect certain people’s lives. The show is one of the works that best presents the message of my creative output.

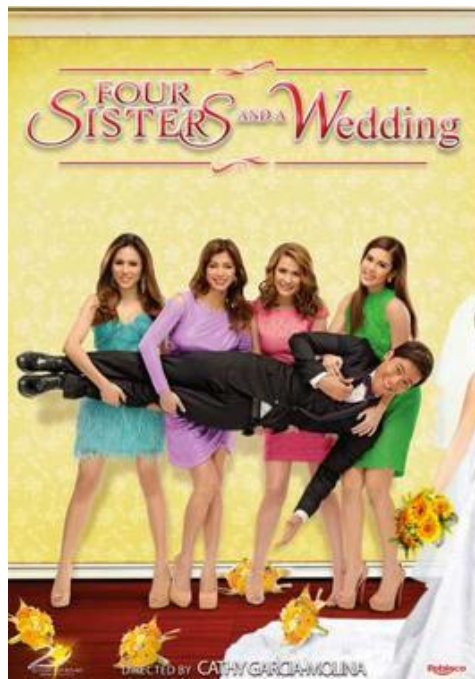
Dissimilar to the “Start-Up” series in Korea. There is a lack of healthcare technology that can help people with special needs. The lack of invention and subpar financial system accentuates daily struggles and emotional pain and takes away the chance to live their lives to

the fullest of these people in need, and the people born to what we perceive as standard would possibly need it in the future.

### **Solving Family Conflicts Through Open Communication Shown in “Four Sisters and a Wedding (2013)”**

#### **Figure 5**

Four Sisters and a Wedding (2020) directed by Cathy Garcia-Molina



Three sisters band together to convince their younger brother not to marry his fiancée. As they interact, they confront long-buried feelings and concerns. In recent years, the Salazar family's children have pursued separate lives. The eldest works in Spain; the second child works in New York; the third child is a Manila-based independent film assistant director; the other is a homeschooling school teacher; and the youngest works as an IT professional in Manila. After a few years of not being together as a family, they find themselves together after CJ reveals his intention to marry Princess, his three-month fiancée. His sisters are surprised, gather for the wedding, and agree to dissuade him from marrying his fiancée (Star Cinema, 2013).

As they interact, they confront the feelings and situations they have been avoiding. Teddie, the eldest, covers the reality that she is not the success that her mother desires. As she tackles



the breach she had with her sister Alex, Bobbie struggles with answering yes to her boyfriend's marriage proposal. Alex becomes overly insecure and possessive of Chad, her long-term boyfriend, and Gabbie's resentment about being left behind and unappreciated by their mother also surfaces. CJ strives to balance his obligations to his family and his future spouse. All siblings re-examine their past selves and who they are now. They confront one another in front of their mother to resolve their life-long inner struggles.

The film shows how the characters show their subjective perception and how it shapes their personality and behavior (Badillo, n.d.). According to Alfred Adler, this situation is one of the tenets of Individual psychology under the Adlerian Theory. My creative output uses the Adlerian Theory to understand where the person with special need character in my film is coming from, displaying estranged behavior toward the people around him.

### **“Everything About Her (2016)” Highlights the Importance of Family and Understanding**

#### **Figure 6**

Everything About Her (2016) directed by Joyce Bernal



The emphasizes the significance of family during difficult times and how these difficulties foster compassion and forgiveness. Joyce Bernal - the film director, tells the story of Vivian (Wilma Santos), a wealthy entrepreneur who discovers she has stage 3 cancer. Jaica (Angel Locsin), a private nurse, was hired to care for her. But Jaica undoubtedly plays a role in Vivian's life since she serves as a bridge between Vivian's son Albert (Xian Lim), who experienced neglect his entire life (Star Cinema, 2016). It will show how their circumstances change and influence them.

The movie delivers the secondary message of my creative output, demonstrates resolution to life-long issues as long as understanding prevails, and shows the importance of patience and love for one's family concealed by the personal perception of things. The situations are evident in my creative output as the character also suffers from cancer. As it pushes away the people who loved him, understanding and love are what it takes to surpass difficult times.

## Results and Discussion

### Figure 7

#### Interview with Buela

**Buela:** "Yung lolo ko kasi ang hobby niya manigarilyo at uminom ng tuba. Nung nakaramdam siya ng masama, ano, nagpahid-pahid muna, albularyo. Kasi nga mahal ang pagpapa-hospital"

**Buela:** "Kaya as much as possible herbal muna, dahon-dahon, oil, hilot, pausok, padasal, palaway."

**Buela:** "Ayun hangang sa tumagal lumaki na yung bukol sa pisngi, turns out cancer pala."

**Eclipse:** "So, lumapit na kayo?"

**Buela:** "Oo, syempre. Di na madaan sa ganun na lang eh"

**Buela:** "Yung na set na yung operation, syempre yung billing operation ang laki."

**Buela:** "Ayun na nga yung anak niya (tito) may health insurance sa pinagtrabahuan niya"

**Eclipse:** "Hindi siya yung nag apply?"

**Buela:** "Oo, pwede niya lang magamit yung insurance ng anak niya"

**Buela:** "So yung nag-aapply na kasi malaki yung gastos, di tinanggap. Kasi, masyado raw severe. Ayaw panila sabihin na masyadong malaki yung bill. So syempre wala kang magawa. Ayun yung akala nilang pinaka safe haven nila, eh."

**Eclipse:** "So umasa tito mo at lolo mo sa health insurance para sa bill?"

**Buela:** "Oo, kasi hindi talaga kaya, eh. Tapos na sa probinsya pa sila, kaya nirefer sila dito sa Manila."

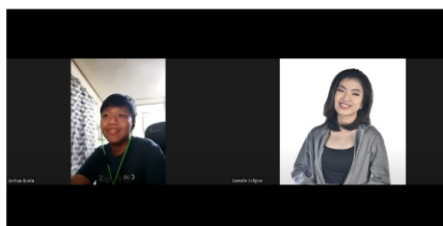
**Eclipse:** "Anong effect nun sa kanila, yung pag tanggi ng health insurance sa kanila."

**Buela:** "Syempre nahirapan, urgent na, eh. Kaya napilitan lumapit sa mga kamag-anak."

**Buela:** "Hanggang ngayon actually nasa stage kami nung nag-aambagan."

**Eclipse:** "Pinagagamot niyo pa rin siya until now?"

**Buela:** "Oo."



The discussion from Figure 7 is about how Buela's grandfather struggles financially and physically. His family tried non-medical treatments such as unction, herbal medicine and intake of liquids, and rituals due to financial incapability to seek treatment from medical doctors. Other than that, when they tried to reach out to the hospital's treatment and financial support. Even though they claimed to have insurance which they hoped to lessen the burden of hospital expenses, it turns out that the insurance cannot cover the bill. In addition, they have to transfer his grandfather to Metro Manila from the province because hospitals and treatments in rural areas are not as efficient in Metro Manila.

Buela's family situation pushed them to seek first non-medical treatment because they knew that the hospital in their province had a subpar performance. They also find it hard to use their remaining money for expensive treatments or therapies without financial help from the said health insurance, which they hoped would at least lessen their financial struggle.

### **Figure 8**

Interview with Chavez:

<https://www.youtube.com/watch?v=ppEAaJmbuaE&list=PLTQLh1IKOjNjou9pUdBgPjxOe3jPGO2Mo&index=1>

**Eclipse:** "Nagkaroon na po ba kayo ng problem sa health insurance?"

**Chavez:** "Ahh, ang una mahirap kumontact sa kanila."

**Eclipse:** "Through call po ba?"

**Chavez:** "Oo, para sa approval ng LOWA. Letter of guaranteed request."

**Chavez:** "Once naka confine ka na, since may agreement sila na kunyari, ang room rate na ibibigay sayo ni HMO card mo na 1700. So, kung napunta ka sa 2600 ang 1700 lang ang ico-cover."

**Eclipse:** "Nirerefund po ba?"

**Chavez:** "Hindi rin siya refundable, since, and agreement nga ay 1700 lang."

**Chavez:** "May annual benefit limit lang"

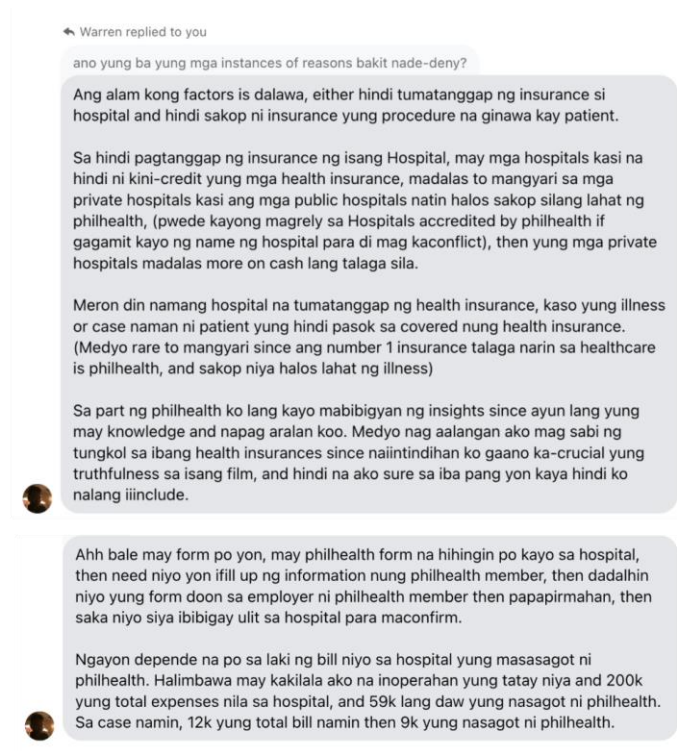
**Eclipse:** "Kung hindi po ba nagamit yung last year na benefit mo maca-carry over po ba?"

**Chavez:** "Hindi, eh. Kahit pag tumaas yung bayarin."

The discussion with Mrs. Chavez is about how much help she can receive from her company's health insurance. Which only covers room expenses at a rate of 1,700 pesos. Whenever rooms with a rate of 1,700 are fully booked, patients like Mrs. Chavez have to pay for the excess amount. More than that, even if they did not use the first annual finance help of 1,700, their insurance company does not carry it over to the next finance help. This situation could potentially burden patients if they happen to have a tight financial status.

## **Figure 9**

Interview with Clarianes



Mr. Clarianes has a mother who is currently sick during the informal interview. He had first-hand experience taking care of his mom and papers related to the hospital's requirements where his mom was confined. He said he was fortunate that the hospital where he admitted his mom accepts his health insurance card, unlike other unfortunate families or patients whose situation cannot be covered by any health insurance card. The state shows that the promise of some health care insurance is contrary to what they offer, resulting in an uncalculated burden for patients and their families. Families or patients that hope to get help from the promise of health insurance cards. However, there is no guarantee that they will receive the expected benefits.

## Conclusions

The Adlerian approach benefits a person by understanding the root of their practices, and the view of themselves can change (Adler Graduate School, 2021). Understanding will point us to where we can begin to progress. It also helps us understand the connection between subpar healthcare technology and systems, persons with special needs, a feeling of inferiority, and a lack of independence. Due to a lack of healthcare technologies and a subpar healthcare financial system, the character patients try alternative therapies or any other non-medical treatments. Whenever none of this helps to get them better, they generate both exterior and internal challenges. However, simply knowing or being aware of the subject is insufficient. To construct or develop a solution to this problem.

Thus, I created a narrative film about a financially comfortable family who begins to struggle financially. Nathan, a young man, is forced to try non-medical treatment and therapy as he battles cancer. The main character starts to worship religious figures, take herbal medication, and do unction. The incident demonstrates that he is desperate to live longer, even though the doctor has diagnosed him with cancer. However, a lack of positive health changes triggers him to act cranky to other people.

## **Recommendation**

### **Research Topic**

For various reasons, interviews help produce a successful research paper. Interviews enable researchers to obtain firsthand information from individuals or groups linked to the research issue. This primary data can provide unique insights and perspectives not available from secondary sources such as books or online databases. More than that, Interviews can assist researchers in developing study questions that are more relevant and meaningful to their target audience. In addition, the researcher must cross-reference interview data with other sources to guarantee its accuracy. People can occasionally forget or misinterpret information, so it is vital to double-check it with other sources to make sure it's correct.

### **Creative Process**

During the production, I experienced trouble. A shot list is recommended because it can save time and money. In addition, having a shot list helps the production team to plan shooting days more efficiently. By knowing exactly what shots the team needs, they can avoid wasting time and resources on unnecessary shots or retakes. Other than that, having a committed team is

crucial to the success of any film production. When the team is dedicated to the project, the ultimate output is of higher quality. People are more likely to go out of their way to guarantee that the film is of the best quality. Lastly, a dope sheet is a must-have tool for the editor. It enables the editor to identify the shots required and the order of shots. It saves time and contributes to the result being coherent and well-paced. These suggestions are essential for future references and researchers while developing an effective short narrative video that communicates the problem to their target audience.

## **References**

- Adler Graduate School. (2021). *Adler Graduate School*. Retrieved from Alfred Adler: Theory and Application: <https://www.alfredadler.edu/about/alfred-adler-theory-application/>
- Akins, R. (2022). *Social Isolation in Disabled People*. Retrieved from Cogentica: <https://www.cogentica.com/social-isolation/>
- Australian Human Rights Commission. (2022). *Know Your Rights: Disability Discrimination*. Retrieved from Australian Human Rights Commission: <https://humanrights.gov.au/our-work/disability-rights/know-your-rights-disability-discrimination#:~:text=Disability%20discrimination%20is%20when%20a,and%20have%20a%20guide%20dog.>
- Badillo, M. (n.d.). *Alfred Adler: Individual Psychology*. Retrieved from: UB Michelle Badillo: <https://sites.google.com/site/ubmichellebadillo/theories-of-personality/alfred-adler-individual-psychology>
- Brooks Rehabilitation. (n.d.). *Hybrid Assistive Limb*. Retrieved from Brooks Rehabilitation: <https://brooksrehab.org/technology/hybrid-assistive-limb-hal/>
- Cherry, K. (2020, September 23). *Very Well Mind*. Retrieved from Alfred Adler Biography: Career and Life: <https://www.verywellmind.com/alfred-adler-2795502>
- David. (2020, November 11). *Start-up: Technology and Innovation is Now in Our Hands*. Retrieved from iTechPost: <https://www.itechpost.com/articles/104077/20201118/start-up-technology-and-innovation-now-in-our-hands.htm>
- Gonzales, Z., & Kang, M. (2022, May 1). *Current Philippine legislation and Representation for the PWD Sector*. Retrieved from The Guidon: <https://theguidon.com/1112/main/2022/05/current-philippine-legislation-and-representation-for-the-pwd-sector/>



- IED Team. (2022, April 24). *Impact of Information Technology on Healthcare*. Retrieved from Institute of Entrepreneurship Development: <https://ied.eu/blog/health-wellbeing-blog/impact-of-information-technology-on-healthcare/>
- Inquirer. (2021, June 30). *Manila Introduces Robotic-aids for Physical Therapy*. Retrieved from Inquirer: <https://newsinfo.inquirer.net/1453458/look-manila-introduces-robotic-aids-for-physical-ty>
- MAKO. (2022, March 8). *MAKO Design*. Retrieved from New Technology Inventions MAKO Wants in 2022: <https://www.makodesign.com/blog/2022/03/08/new-technology-inventions-mako-wants-/>
- Massachusetts Rehabilitation Commission. (2022). *Rehabilitation Technology*. Retrieved from [https://www.mass.gov/service-details/rehabilitation-technology#:~:text=Rehabilitation%20\(RT\)%20is%20the,living%20at%20home%2C%20and%20recreation](https://www.mass.gov/service-details/rehabilitation-technology#:~:text=Rehabilitation%20(RT)%20is%20the,living%20at%20home%2C%20and%20recreation)
- Master Class. (2021, September 8). *22 Essential Literary Devices and How to Use Them In Your Writing*. Retrieved from Master Class: <https://www.masterclass.com/articles/22-essential-literary-devices>
- Pulran,. A. (n.d.) *Disabled People Have Unique Perspectives On Solitude*. Retrieved from Forbes: <https://www.forbes.com/sites/andrewpulrang/2020/03/25/disabled-people-have-unique-perspectives-on-solitude/?sh=14b843425e73>
- Seervai, S., Shah, A., & Shah, T. (2019, April 16). *The Challenges of Living with a Disability in America, and How Serious Illness Can Add to Them*. Retrieved from The Commonwealth Fund: <https://www.commonwealthfund.org/publications/fund-reports/2019/apr/challenges-living-disability-america-and-how-serious-illness-can>
- Smykowski, J. (2022, October 5). *Betterhelp*. Retrieved from Alderian Theory: Understanding Individual: <https://www.betterhelp.com/advice/psychologists/adlerian-theory-understanding-the-indil/>

Star Cinema. (2016). *Everything About Her*. Retrieved from: Star Cinema:  
[https://starcinema.abs-cbn.com/movies/everything-about-her-\(1\)](https://starcinema.abs-cbn.com/movies/everything-about-her-(1))

Star Cinema. (2013). *Four Sisters and a Wedding*. Retrieved from: Star Cinema:  
<https://starcinema.abs-cbn.com/movies/four-sisters-and-a-wedding>

Tabanera, L. (2019, August 8). *5 Things That'll Make You Want To Watch 'Ang Babaeng Allergic Sa WiFi' On Netflix Even More*. Retrieved from: Cosmopolitan:  
<https://www.cosmo.ph/entertainment/ang-babaeng-allergic-sa-wifi-netflix-a2520-20190818>



Feb 28, 2023

# Plagiarism Scan Report



Characters:5870	Words:940
Sentences:44	Speak Time: 8 Min

Excluded URL: None

## Content Checked for Plagiarism

Tahanan Kong Walang Hagdan: A Narrative Film About the Lag in Healthcare  
 Genalie Eclipse Adviser Mr. Elvin Valerio Abstract The lag in healthcare technology and system continuously makes people with disabilities (PWD) or people with special needs due to disease or illness experience struggles and barriers in living their daily lives. They encounter problems in a location that is not easily accessible. Poor assistive technology (assistive, adaptive, and rehabilitative devices). Negative attitudes toward disability among the public. Services and initiatives restrict their participation in many facets of society (Centers for Disease Control and Prevention, 2020). Patients receive little to no assistance from a subpar medical finance system. The creative study aims to understand the connection between the lag in healthcare technology and systems, persons with special needs, a feeling of inferiority, and a lack of independence. Qualitative research conducts a one-on-one interview to collect data from its interviewees. A creative output will then show the importance of prioritizing healthcare in helping people with special needs or illnesses. This healthcare improvement and advancement does not compromise others' lives and does not cause perpetuating global issues.

Keywords: persons with disabilities, health, illness, healthcare, medical finance system

Introduction As a generation z child born in an era in which technology is starting to dominate the market and household through

**Plagiarism Scan Report**

Check Grammar | Make it Unique

Characters: 5870 | Words: 940 | Sentences: 44 | Speak Time: 8 Min

0% Plagiarized | 100% Unique

View Plagiarized Sources

Tahanan Kong Walang Hagdan: A Narrative Film About the Lag in Healthcare Genalie Eclipse Adviser Mr. Elvin Valerio Abstract The lag in healthcare technology and system continuously makes people with disabilities (PWD) or people with special needs due to disease or illness experience struggles and barriers in living their daily lives. They encounter problems in a location that is not easily accessible. Poor assistive technology (assistive, adaptive, and rehabilitative devices). Negative attitudes toward disability among the public. Services and initiatives restrict their participation in many facets of society (Centers for Disease Control and Prevention, 2020). Patients receive little to no assistance from a subpar medical finance system. The creative study aims to understand the connection between the lag in healthcare technology and systems, persons with special needs, a feeling of inferiority, and a lack of independence. Qualitative research conducts a one-on-one interview to collect data from its interviewees. A creative output will then show the importance of prioritizing healthcare in helping people with special needs or illnesses. This healthcare improvement and advancement does not compromise others' lives and does not cause perpetuating global issues. Keywords: persons with disabilities, health, illness, healthcare, medical finance system Introduction As a generation z child born in an era in which technology is starting to dominate the market and household through machines,

**Plagiarism Scan Report**

Check Grammar | Make it Unique

Characters: 240 | Words: 300 | Sentences: 21 | Speak Time: 4 Min

0% Plagiarized | 100% Unique

View Plagiarized Sources

"Everything About Her (2021)" highlights the importance of Family and Understanding Figure 5 Everything About Her (2021) directed by Joyce Bernar. It emphasizes the significance of family during difficult times and how these difficulties foster compassion and forgiveness. Joyce Bernar - the film director, tells the story of Wilson (Mina Santos), a wealthy entrepreneur who discovers she has stage 3 cancer. Julia (Angel Labana) a private nurse, was hired to care for her. She later emboldenously plays a role in Wilson's life (she serves as a bridge between Wilson's son Albert (Sean Lims), who experienced neglect his entire life (Star Cinema, 2018). It will show how their circumstances change and influence them. The movie delivers the secondary message of my creative output, demonstrates resolution to the long levels as long as understanding oneself, and shows the importance of patience and love for one's family (exacerbated by the personal perspective of things). The situations are evident in my creative output as the character also suffers from cancer. As it pushes away the people who loved him, understanding and love are what it takes to surpass difficult times. Lack of health and Rehabilitation Technology as a Root of Pain in "Teen Sunday (2017)" Figure 6 Teen Sunday (2017) a drama film directed by Cathy Garcia-Molina. "Teen Sunday" is about the four Bonifacio siblings. The siblings are forcibly returned to their childhood home after their father was diagnosed with Stage 4

**Plagiarism Scan Report**

Check Grammar | Make it Unique

Characters: 6022 | Words: 930 | Sentences: 47 | Speak Time: 8 Min

0% Plagiarized | 100% Unique

View Plagiarized Sources

Review of Related Works The review of related works discusses how creative output could effectively show how fast-paced technological advancement revolves around communication technology and transportation, which could negatively affect people's way of living. More than that, it will discuss how healthcare technological inventions and systems could possibly help people with special needs (understand and) in individual. An application for visually impaired in "Start Up" (2020) Figure 6 Start-Up (2021) a series by Shubh Duggan After entering the Sandbox, Saman Tach began to generate concepts for their company, service, or application. On demo days, startups present their business plans to investors, partners, and mentors to see which ones have the potential to be successful. Do-san created the NonoCI software exclusively for those with visual impairments. Users aim their smartphones in a certain direction, and (AI) artificial intelligence (AI) would make the software accurately describes and informs the user using speech recognition what it has seen. The eye of the user is NonoCI. After knowing in secret that Choi Won-sook, played by Kim Hae-sook, Ogi's grandma, gradually loses her vision after being diagnosed with the disease. Do-san pushes it through (David, 2023). Today, innovation is a hot topic. Certain things can currently be made that appeared unimaginable in the past. "Start-Up" is a Korean drama that tells the story of young people who dream of success

**Plagiarism Scan Report**

Check Grammar | Make it Unique

Characters: 4089 | Words: 689 | Sentences: 36 | Speak Time: 4 Min

0% Plagiarized | 100% Unique

View Plagiarized Sources

The Production The early pre-production stage of "Tahanan Kong Walang Hagdan" will focus on task organization in preparation for the production stage. Tasks include the listing of milestones and deliverables made through a Gantt chart. At this stage, I purchased the planned software that I will use to develop my creative output. The later stage of the pre-production is my story as it plays a vital role in producing my creative output and other deliverables. I will continue to gather data through credible online sources and watch films that can help me develop my story by developing my strengths and learning from the mistakes and weaknesses of existing creative outputs and researchers. I will hold a casting call to find an actor or actress who will meet the physical and technical requirements of the roles in my film. In addition, I will be looking for a specific location that completely matches what I envision or a site that I can manipulate to meet the environmental demands of my film. Production The early stages of production will focus on equipment and site bookings. Before choosing my creative output, I will compile a list of my production requirements to ensure a secure and seamless flow of the production of my film. In addition, I will

**Plagiarism Scan Report**

Check Grammar | Make it Unique

Characters: 3796 | Words: 796 | Sentences: 28 | Speak Time: 7 Min

0% Plagiarized | 100% Unique

View Plagiarized Sources

Review of Related Literature Fast-paced technical innovation primarily focuses on communication technology and transportation to create an ultramodern society in which people anticipate what the future may and should be. The review of related literature discusses the challenges faced by persons with disabilities (PWD) and the status and how healthcare technology and systems could help by discussing the Alderson Theory, External Challenges Faced by PWDs. The government has tried to provide through enacting national legislation, services, and policies to Persons with Disabilities (PWD) (Conales & Kang, 2022). However, the effort is not enough to help them. It is inevitable for PWDs to experience discrimination in employment, education, and accommodation when getting or using services and accessing public places. Zack and Da, who are deaf, complained that the absence of accessibility features prevented them from enjoying concerts at their local entertainment facility. The complainants, who have hearing issues, said they could not enjoy performances at their local entertainment venue because it was not modified to match their requirements. They agreed that the venue operator would install a hearing assistance system and allow the complainants to sample the equipment (Australian Human Rights Commission, 2022). Simple rehabilitation technology (RT) - is the use of technology to address the needs of people with disabilities; specifically, the hearing